



INSPIRE

INSPIRE

BY



Preserved Nature **since 1984**

Verdissimo is part of the Innovaflora group, the world's largest producer of preserved flowers, plants and trees. Preserved plants are a 100% natural and require minimal maintenance.

The preservation process allows us to create a unique decorative product that combines the best of two worlds: The unique beauty of a natural plant combined with the durability of a man-made object.

The goal of Verdissimo company is to enable people worldwide to enjoy natural beauty and balance economy, ease-of-use and respect for the environment.

What are **Verdissimo®** preserved trees and plants

100% natural

All preserved Verdissimo products are real. They are natural plants that have been treated with a bio-degradable formula.

Preserved to last for years

Our unique process, developed with vegetable-based glycerin, replaces the humidity within the plant with a component that does not evaporate and thereby preserve beauty over time.

Cost-effective

Our preserved trees last for years and significantly lower the need for re-purchasing.

Easy to maintain and install

The products do not require light or water, leading to significant savings in installation and maintenance.

Powerful addition to traditional solutions

The preserved products can be successfully mixed with fresh or artificial plants for complete design freedom to generate different environments and effects.

Respectful with the environment

The Verdissimo preserved plants are more environmentally friendly than fresh cut flowers due to their long life and low energy consumption for transport and storage. The result is a significantly lower carbon footprint than fresh or artificial flowers. Help care for the environment ... One plant at the time.



Last for years



100% natural



No light or water required

What are **Verdissimo®** preserved trees and plants **not**

They are not freeze dried (lyophilized) or dehydrated products

None of the Verdissimo products use freeze-drying for their preservation. The lyophilization suppresses important characteristics of the fresh product for a living appearance.

They are not growing

To ensure that the plant is at its best and maintain the appearance of a living plant, the preservation process stops any biological process that promotes the aging of the plant.

They are not artificial

Although the product undergoes a transformation process that stabilizes the natural plant, our process does not include any of the typical components in artificial flowers such as plastic or synthetic fabrics.

They are not toxic

All our products are designed for daily contact with pets and people. They do not pose a health risk.





INSPIRE

In Verdissimo our inspiration is the vision of our clients, always working to create balance between architecture, functionality and nature:

The natural preserved products create humanized and enjoyable living spaces which allow us to relax and be more creative.

They allow us to soften structural elements of architecture that may seem alien to us.

Bringing nature indoor adds a note of color and creates a unique space.

In areas with elevated noise, the Verdissimo preserved products are sound-absorbing and help create an acoustically pleasant environment.

Natural space dividers help define and customize the environment.



INSPIRE

PRESERVED TREES AND PLANTS

12 TREES

- 14 JUMBO
- 20 SLIM
- 26 WIDE
- 32 CROWN
- 34 BONSAI
- 40 TOPIARY
- 50 CONIFER

52 PLANTS

- 54 PARVIFOLIA
- 56 NICOLY
- 58 GINERIUM

60 PALMS

- 62 WASHINGTONIA
- 64 PHOENIX
- 68 SPECIAL

70 DECO

- 72 DIVIDERS
- 74 PANELS
- 76 SPHERES
- 80 TILES
- 82 TOTEMS
- 85 FRAMES



Last for years



100% natural



No light or water required

TREES



DECO





- 14 JUMBO
- 20 SLIM
- 26 WIDE
- 32 CROWN
- 34 BONSAI
- 40 TOPIARY
- 50 CONIFER

TREES







Salal jumbo
JSA/0116

Salal jumbo
JSA/0119

Cocolus jumbo
JCO/0116

Cocolus jumbo
JCO/0119

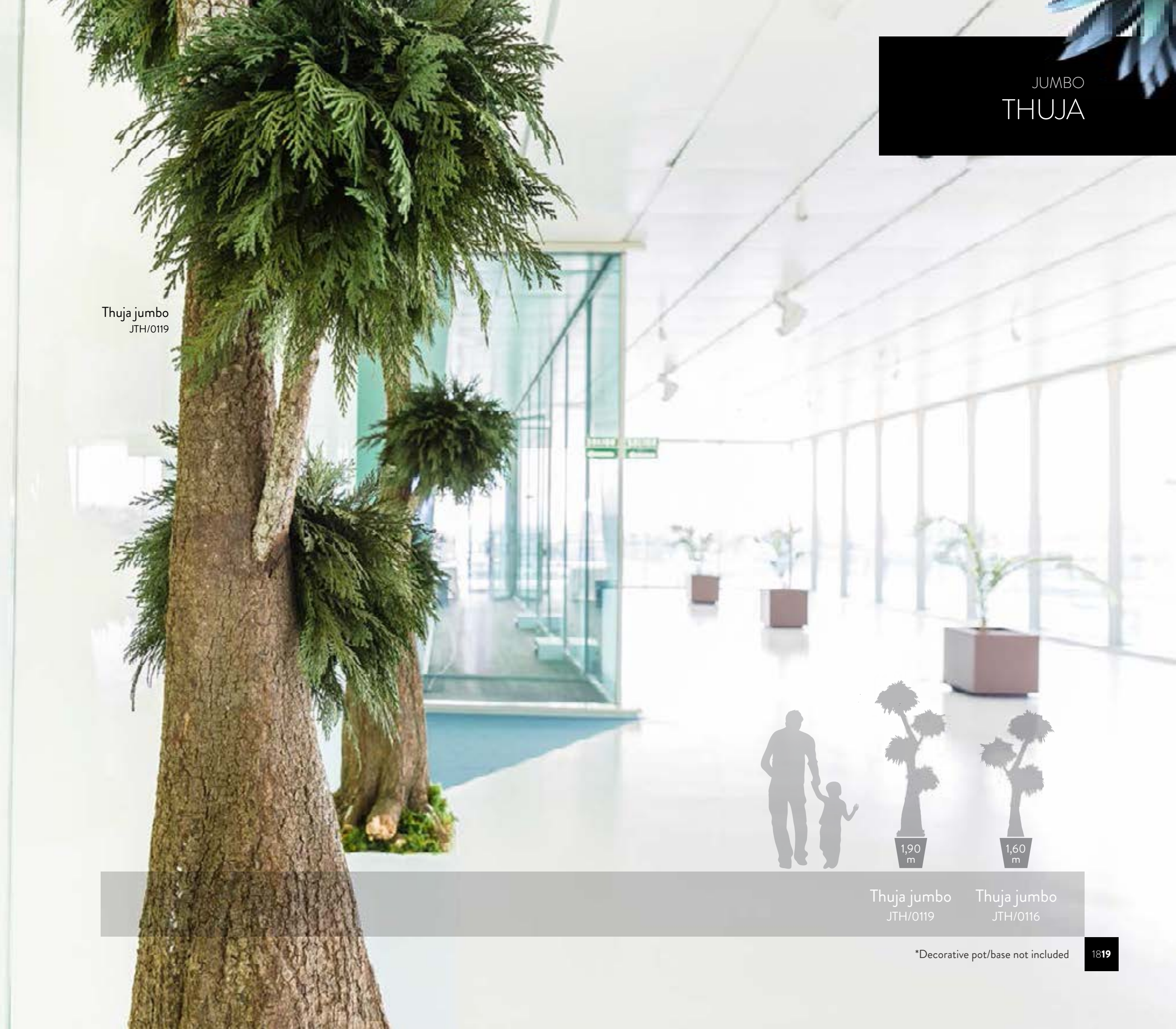
*Decorative pot/base not included

JUMBO
THUJA



Thuja jumbo
JTH/0119

Thuja jumbo
JTH/0119



Thuja jumbo
JTH/0119



Thuja jumbo
JTH/0119

Thuja jumbo
JTH/0116

*Decorative pot/base not included





Nicolý tree
ANI/0118 Green



Nicolý tree
ANI/0124 Green

SLIM
NICOLY



Nicolý tree ANI/0113	Nicolý tree ANI/0118	Nicolý tree ANI/0124
-------------------------	-------------------------	-------------------------

*Decorative pot/base not included

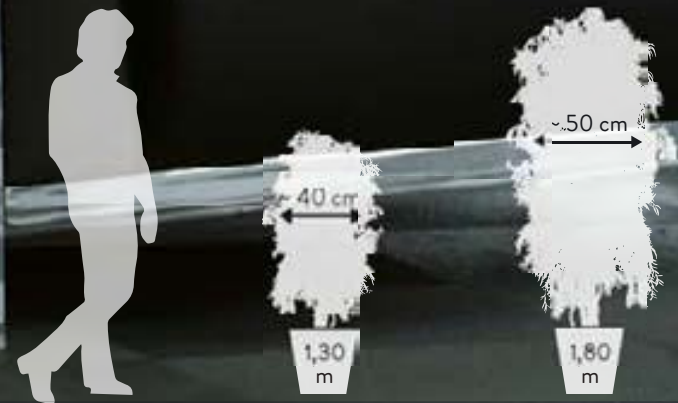


Tenuifolium tree
API/0113 Green



Tenuifolium tree
API/0118 Green

Tenuifolium tree
API/0113 Green



Tenuifolium tree
API/0113

Tenuifolium tree
API/0118

SLIM
TENUIFOLIUM

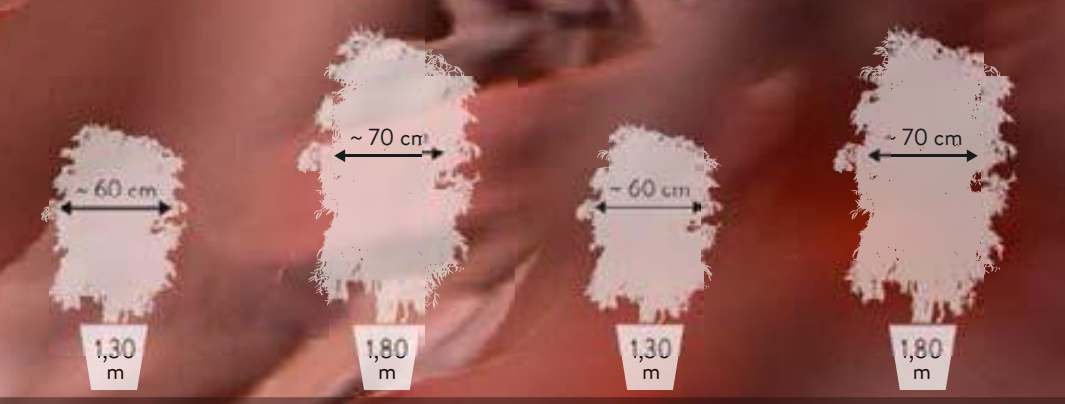
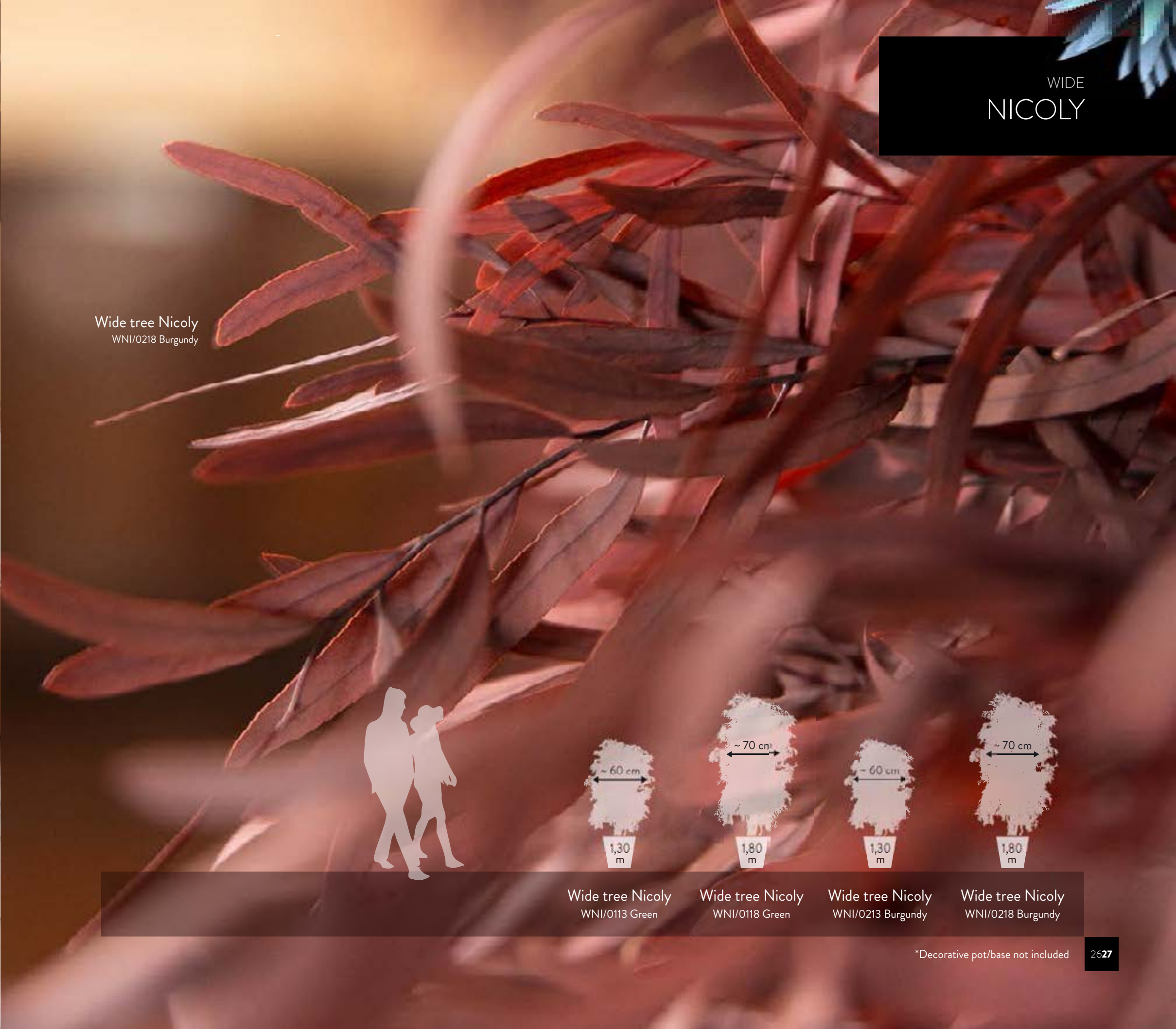
*Decorative pot/base not included



Wide tree Nicoly
WNI/0218 Burgundy

Wide tree Nicoly
WNI/0213 Burgundy

Wide tree Nicoly
WNI/0218 Burgundy



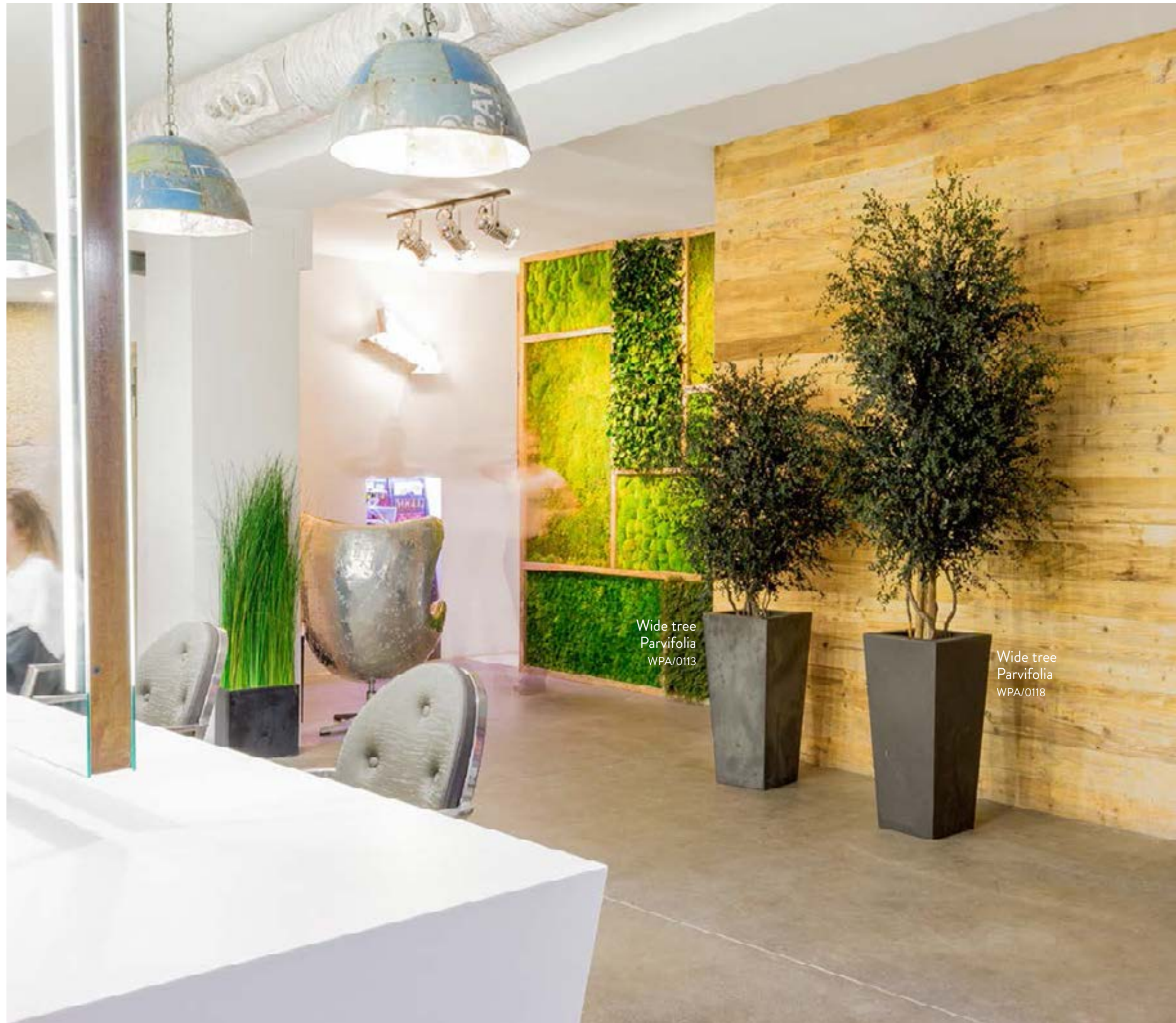
Wide tree Nicoly
WNI/0113 Green

Wide tree Nicoly
WNI/0118 Green

Wide tree Nicoly
WNI/0213 Burgundy

Wide tree Nicoly
WNI/0218 Burgundy

*Decorative pot/base not included



Wide tree
Parvifolia
WPA/0113

Wide tree
Parvifolia
WPA/0118



Wide tree
Parvifolia
WPA/0113

Wide tree
Parvifolia
WPA/0118



Wide tree Parvifolia
WPA/0113



Wide tree Parvifolia
WPA/0118

WIDE
PARVIFOLIA

*Decorative pot/base not included



Wide tree Populus
WPO/0118

WIDE
POPULUS

Wide tree Populus
WPO/0118



Wide tree Populus
WPO/0113

Wide tree Populus
WPO/0118

*Decorative pot/base not included



Nicoly crown
CNI/0124

Tenuifolium crown
CPI/0110

Populus crown
CPO/0113

CROWN
POPULUS
NICOLY
TENUIFOLIUM



Tenuifolium crown
CPI/0115

1,50
m

1,00
m

2,40
m

2,00
m

1,30
m

2,40
m

2,00
m

1,30
m

Tenuifolium crown
CPI/0115

Tenuifolium crown
CPI/0110

Populus crown
CPO/0124

Populus crown
CPO/0120

Populus crown
CPO/0113

Nicoly crown
CNI/0124

Nicoly crown
CNI/0120

Nicoly crown
CNI/0113

*Decorative pot/base not included



Procumbens bonsai
BJU70

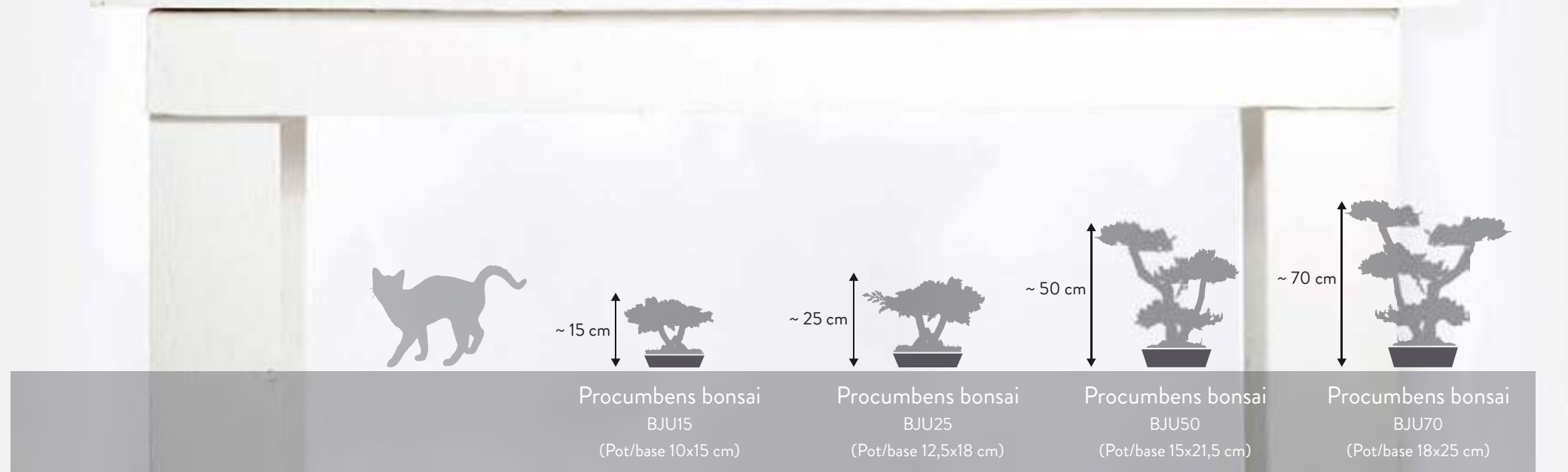


Procumbens bonsai
BJU70

Procumbens bonsai
BJU50

Procumbens bonsai
BJU25

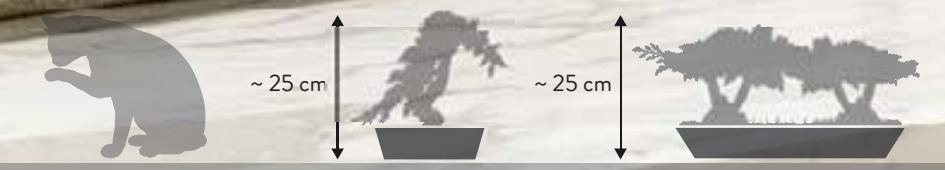
Procumbens
bonsai
BJU15



*Decorative pot/base included



Simple root bonsai
BVJ/S25



Simple root bonsai
BVJ/S25
(Pot/base 15x15 cm)

Doble root bonsai
BVJ/D25
(Pot/base 20x50 cm)

*Decorative pot/base included



Tobira bonsai
BTO70

BONSAI
TOBIRA
TENUIFOLIUM



Tenuifolium bonsai
BPI70

Tenuifolium bonsai
BPI50

Tenuifolium
bonsai
BPI25



Tobira bonsai
BTO50
(Pot/base 15x21,5 cm)

Tobira bonsai
BTO70
(Pot/base 18x25 cm)

Tenuifolium bonsai
BPI25
(Pot/base 12,5x18 cm)

Tenuifolium bonsai
BPI50
(Pot/base 15x21,5 cm)

Tenuifolium bonsai
BPI70
(Pot/base 18x25 cm)

*Decorative pot/base included

TOPIARY
4 SPHERES



Tenuifolium 4 spheres tree
ABP/0118

Thuja 4 spheres tree
ABT/0118

Tenuifolium 4 spheres tree
ABP/0118

Nicolý 4 spheres tree
ABN/0118

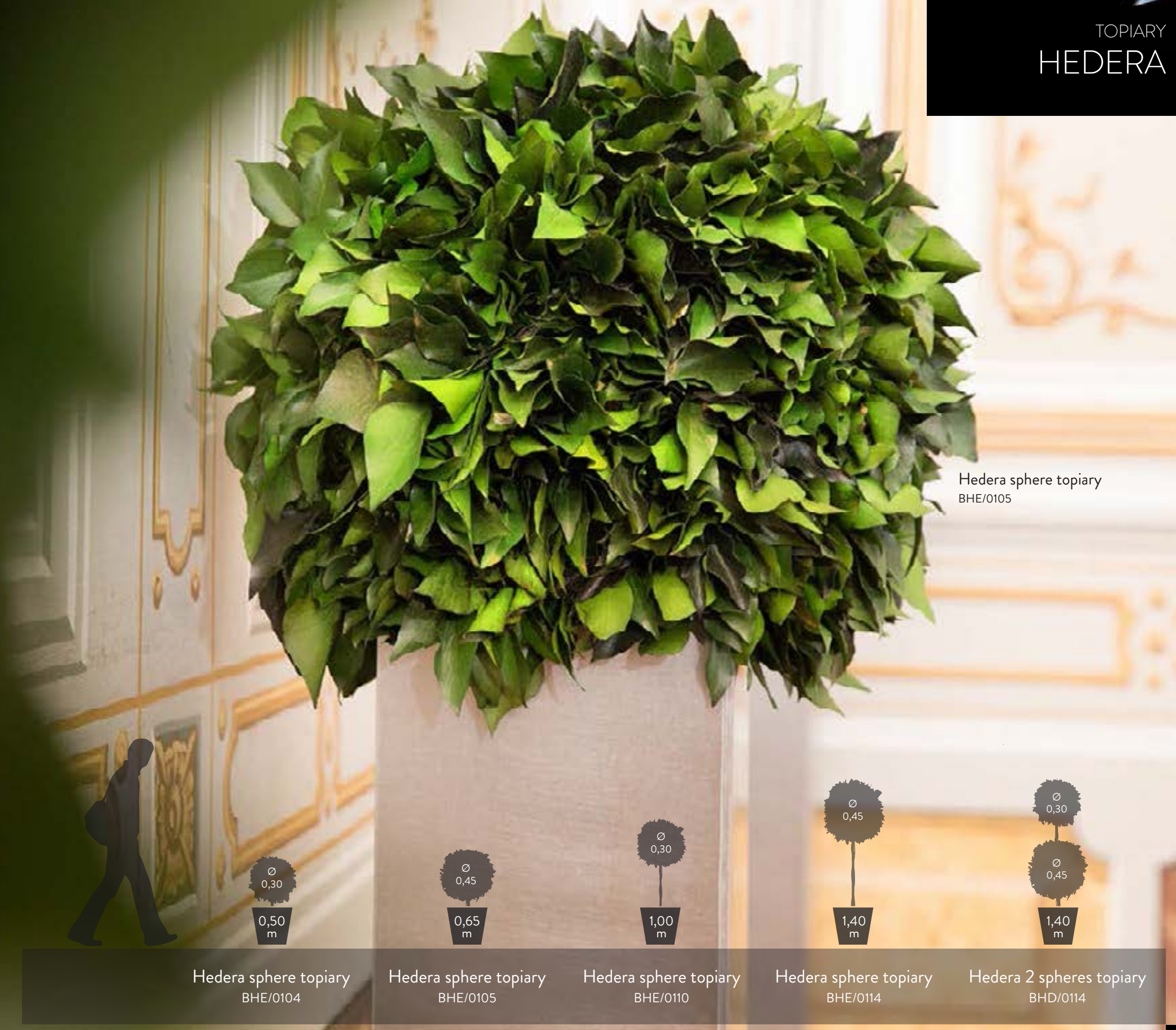


Thuja 4 spheres tree
ABT/0118

Tenuifolium 4 spheres tree
ABP/0118

Nicolý 4 spheres tree
ABN/0118

*Decorative pot/base not included



*Decorative pot/base not included



Hedera spheres
topiary
BHE/0105



Thuja sphere topiary
 BTH/0114

Thuja sphere topiary
 BTH/0104

Tenuifolium sphere topiary
 BPI/0105



Tenuifolium sphere topiary
 BPI/0114

Thuja sphere topiary
 BTH/0110



Thuja sphere topiary BTH/0104 Thuja sphere topiary BTH/0105 Thuja sphere topiary BTH/0110 Thuja sphere topiary BTH/0114 Thuja sphere topiary BPI/0104 Thuja sphere topiary BPI/0105 Thuja sphere topiary BPI/0110 Thuja sphere topiary BPI/0114

*Decorative pot/base not included

Parvifolia 5 spheres tree
MPA/0115



Parvifolia 7 spheres tree
MPA/0119



Tenuifolium 5 spheres tree
MPI/0115



Tenuifolium 7 spheres tree
MPI/0119



Parvifolia 5 spheres tree
MPA/0115 Ø20 cm.

Parvifolia 7 spheres tree
MPA/0119 Ø20 cm.

Tenuifolium 5 spheres tree
MPI/0115 Ø20 cm.

Tenuifolium 7 spheres tree
MPI/0119 Ø20 cm.

*Decorative pot/base not included



Columnaris
COL/0118

CONIFER
COLUMNARIS
STARDUST



Stardust
STA/0118

Stardust
STA/0118



*Decorative pot/base not included



54 PARVIFOLIA
56 NICOLY
58 GINERIUM

PLANTS



Parvifolia plant
SPA/0107



~ 70
cm

Parvifolia plant
SPA/0107

*Decorative pot/base not included



Nicoly plant
SNI/0107



Nicoly plant
SNI/0107



Nicoly plant
SNI/0107

*Decorative pot/base not included



Ginerium
plant
SGI/0112

DIRECTORIO

P_00. AMST
REST

P_01. CERV

P_02. ESCU
FUND
AULAS

P_03. ESPAC

~120
cm

Ginerium plant
SGI/0112

*Decorative pot/base not included



62 WASHINGTONIA
64 PHOENIX
68 SPECIAL

PALMS





Washingtonia palm tree kit
KWA/0190



Washingtonia palm tree kit
KWA/0190

Washingtonia palm tree kit
KWA/0240



Washingtonia palm tree kit
KWA/0140

Washingtonia palm tree kit
KWA/0190

Washingtonia palm tree kit
KWA/0240

*Decorative pot/base not included



Phoenix palm tree kit
KPH/0300



Phoenix palm tree kit
KPH/0180

Phoenix palm tree kit
KPH/0300



Phoenix palm tree kit
KPH/0180

Phoenix palm tree kit
KPH/0240

Phoenix palm tree kit
KPH/0300

*Decorative pot/base not included



Phoenix palm tree
KPB/0200

PALMS
PHOENIX



Phoenix Agave trunk kit
KAG/0230



1,00
m

1,50
m

2,00
m

2,30
m

Phoenix palm tree
KPB/0100

Phoenix palm tree
KPB/0150

Phoenix palm tree
KPB/0200

Phoenix Agave trunk kit
KAG/0230

*Decorative pot/base not included

SPECIAL SIZES

Custom made preserved palms up to 12m tall



PALMS
PHOENIX

Phoenix Yurugano trunk
YPH/0300

Phoenix Yurugano trunk
YPH/0220

2,20
m

3,00
m

Phoenix Yurugano trunk
YPH/0220

Phoenix Yurugano trunk
YPH/0300

*Decorative pot/base not included



72 DIVIDERS
74 PANELS
76 SPHERES
80 TILES
82 TOTEMS
85 FRAMES

DECCO



Divider Ginerium
DGI/0118

Divider Ginerium
DGI/0118



1,30
m

1,80
m

Divider Ginerium
DGI/0113

Divider Ginerium
DGI/0118

*Kit preserved plant and frame/base included
The product requires light assembly



- | | | | | | | |
|---|---|---|---|---|---|---|
|  |  |  |  |  |  |  |
| | 0,50x0,50 m | 0,50x1,00 m | 1,00x1,00 m | 0,50x0,50 m | 0,50x1,00 m | 1,00x1,00 m |
| | Flat moss panel
BMP/0505 | Flat moss panel
BMP/0510 | Flat moss panel
BMP/1010 | Flat & Pole moss panel
BMB/0505 | Flat & Pole moss panel
BMB/0510 | Flat & Pole moss panel
BMB/1010 |



Flat moss sphere
EMP-GDE Green Ø0,55 m

Flat moss sphere
EMP-MED Green Ø0,40 m

Flat moss sphere
EMP-GIG Green Ø0,80 m



DECO
SPHERES

Pole moss sphere
EMB-GDE Green Ø0,55 m

Pole moss sphere
EMB-MED Green Ø0,40 m

Pole moss sphere
EMB-GDE Green Ø0,55 m

Pole moss sphere
EMB-MED Green Ø0,40 m



Flat moss sphere EMP-PEQ Green
Flat moss sphere EMP-MED Green
Flat moss sphere EMP-GDE Green
Flat moss sphere EMP-GIG Green
Pole moss sphere EMB-PEQ Green
Pole moss sphere EMB-MED Green
Pole moss sphere EMB-GDE Green





Lichen tile
TLM/4936
MAGENTA

Lichen tile
TLM/6336
DARK BLUE

Lichen tile
TLM/0036
NATURAL

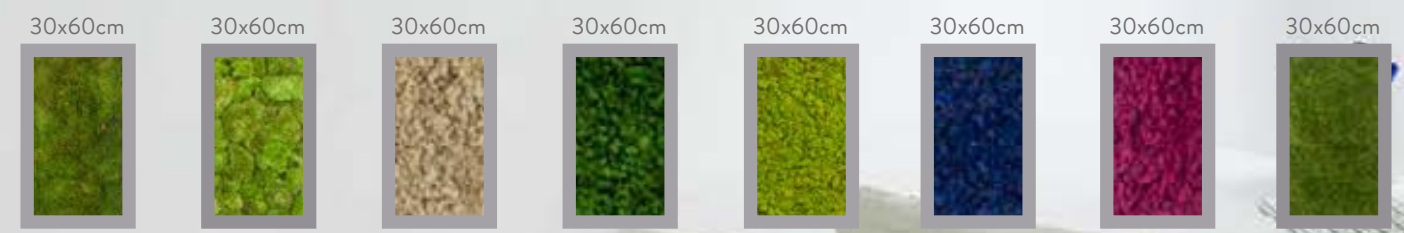


Flat moss tile
TFM/0136

Pole moss tile
TPM/0136

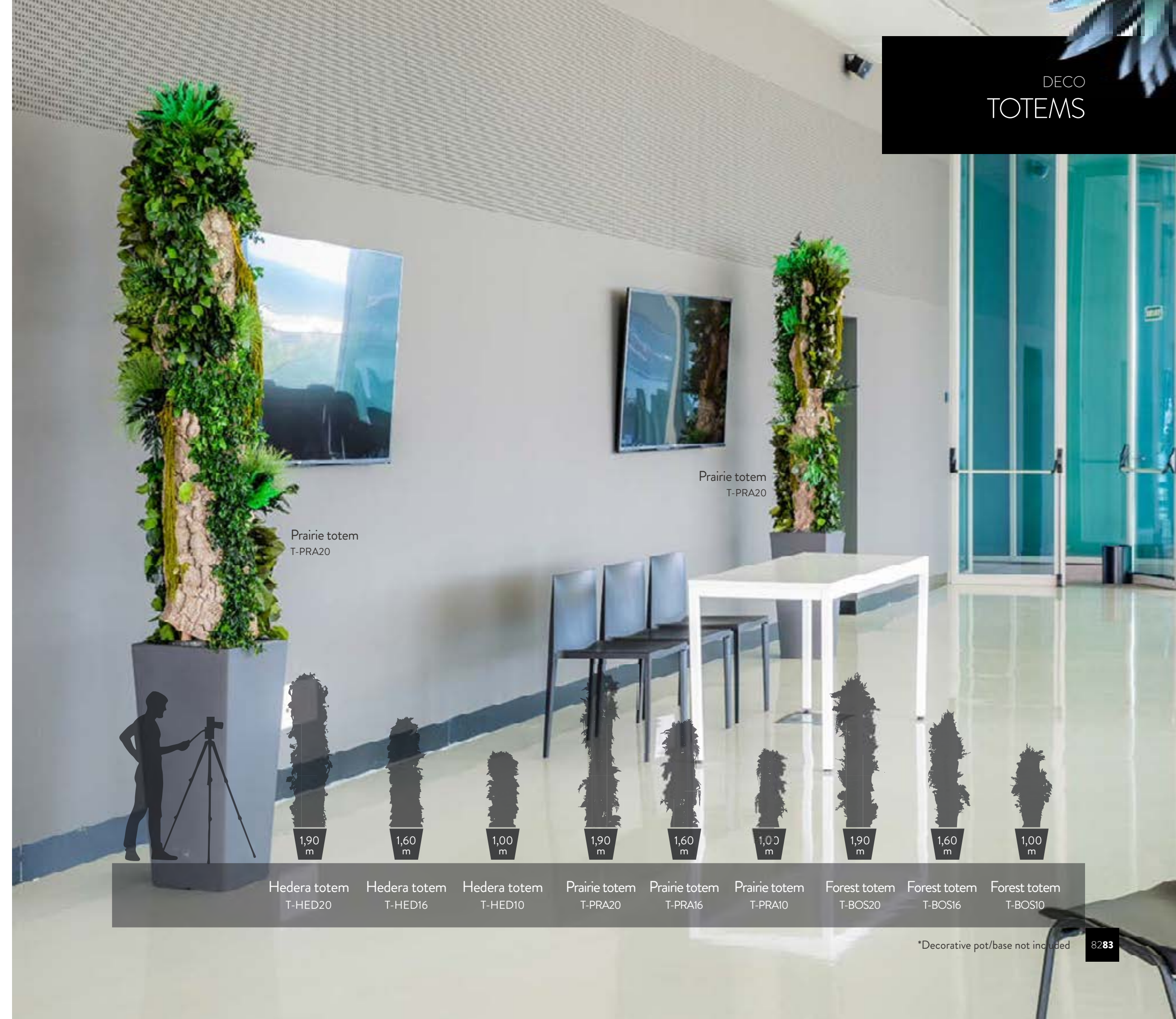
Lichen tile
TLM/1136
LIGHT GREEN

Grass tile
TTU/0136



30x60cm	30x60cm	30x60cm	30x60cm	30x60cm	30x60cm	30x60cm	30x60cm
Flat moss tile TFM/0136	Pole moss tile TPM/0136	Lichen tile TLM/0036 NATURAL	Lichen tile TLM/0136 GREEN	Lichen tile TLM/1136 LIGHT GREEN	Lichen tile TLM/6336 DARK BLUE	Lichen tile TLM/4936 MAGENTA	Grass tile TTU/0136

*Kit preserved plant and frame/base included **Please contact us for the full range of colors available





Prairie totem
T-PRA20



Pole moss
frame
FPM/2030

Pole moss
frame
FPM/1515



15x15 cm



Pole moss frame
FPM/01515

20x30 cm



Pole moss frame
FPM/2030

*Kit preserved plant and frame/base included

Maintenance and care

To remove dust, clean regularly with a dry or slightly damp cloth/duster or apply compressed air at low power and low temperature. Once free of dust, anti-static polish sprays with paraffin / wax base can be added.

- For indoor use only.
- Do not water.
- Avoid direct and prolonged exposure to sunlight.
- Avoid prolonged exposure to high humidity (greater than 80%).
- Avoid crushing, pressing or folding foliage or flowers.

Europe & Asia

Mail: sales@verdissimo.com
Tel: +34 961 571 161
Address: C/ Ciudad de Sevilla, 39
46988 Paterna
Valencia - Spain

Latin America

Mail: salesLA@verdissimo.com
Tel: +57 1 589 4100
Address: Km2 vía Ecopetrol, Vereda El Porvenir
Tocancipá - Colombia

North America

Our local partner: Infinite Rose
Mail: salesUSA@verdissimo.com
Tel: +1 305 778 5550
Address: 7499 NW 31st Street
Miami - FL 33122 U.S.A.
www.infiniterose.com

Japan

Our local partner: Mono International
Mail: garden@mo-no.co.jp
Tel: +03-38930168
Address: 2-1-21, Showamachi, Kita-ku,
Tokyo, 114-0011, Japan
www.verdissimo.co.jp





www.verdissimo.com